

Smart Filament LED Bulb Installation Manual



Smart Filament LED Bulb Installation Manual

Specifications

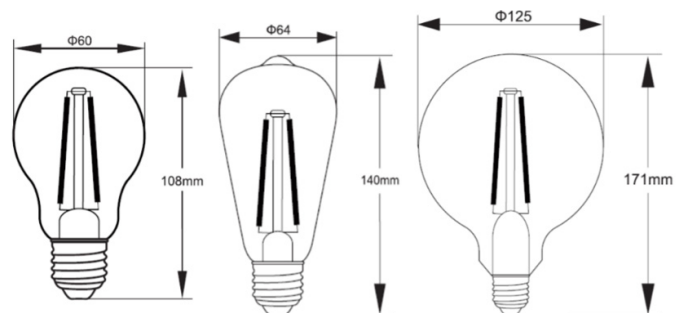
Product Code	HYUFIL002W	HYUFIL003W	HYUFIL005W
IP Rating	IP20		
CCT	2700K – 6500K	2700K – 6500K	2700K – 6500K
Colour Rendering Index	>80	>80	>80
Total Power	7W	7W	7W
Lumen Output	700lm	700lm	700lm
Voltage Rating	240V	240V	240V
Dimmable	Yes	Yes	Yes
Rated Average Design Life	25,000Hrs	25,000Hrs	25,000Hrs
Base	E27 (Edison Screw)	E27 (Edison Screw)	E27 (Edison Screw)
Dimensions	Ø 60x108mm	Ø 64x140mm	Ø 125x171mm
Wi-Fi Frequency	2.4GHz	2.4GHz	2.4GHz

Warranty information

3 years limited warranty. Visit <https://hyundailighting.com.au/terms-and-conditions/> for detailed warranty information.
Email: info@hyundailighting.com.au

Installation

- 1 Install Smart Filament LED Bulb by rotating the bulb clockwise into the base.



Smart Filament LED Bulb Installation Manual

Download App

Download “Smart Life – Smart Living” app from Apple store or Google Play and install it into your smart phone or tablet device. Alternatively, scanning the QR code below will take you to the app’s download page.



Registration and Login

- 1 Open the “Smart Life - Smart Living - Smart Living” app from your smart phone.
- 2 Follow the prompts to register and login

Add device

NOTE: Smart Filament LED Bulb must be connected to 2.4 GHz (not 5 GHz) WiFi connection for smart control. Visit <https://hyundailighting.com.au/switching-your-wifi-from-5ghz-to-2-4ghz/> for steps to switch your Wi-Fi network from 5 GHz to 2.4 GHz.

- 1 Connect the Smart Filament LED Bulb to a power source. Once connected, the bulb will start blinking rapidly indicating it is in pairing mode. If not, to enter pairing mode, turn the bulb on and then off 3 to 5 times with one second wait between turning on and off. Finally, the bulb must be on and should start blinking rapidly by now.

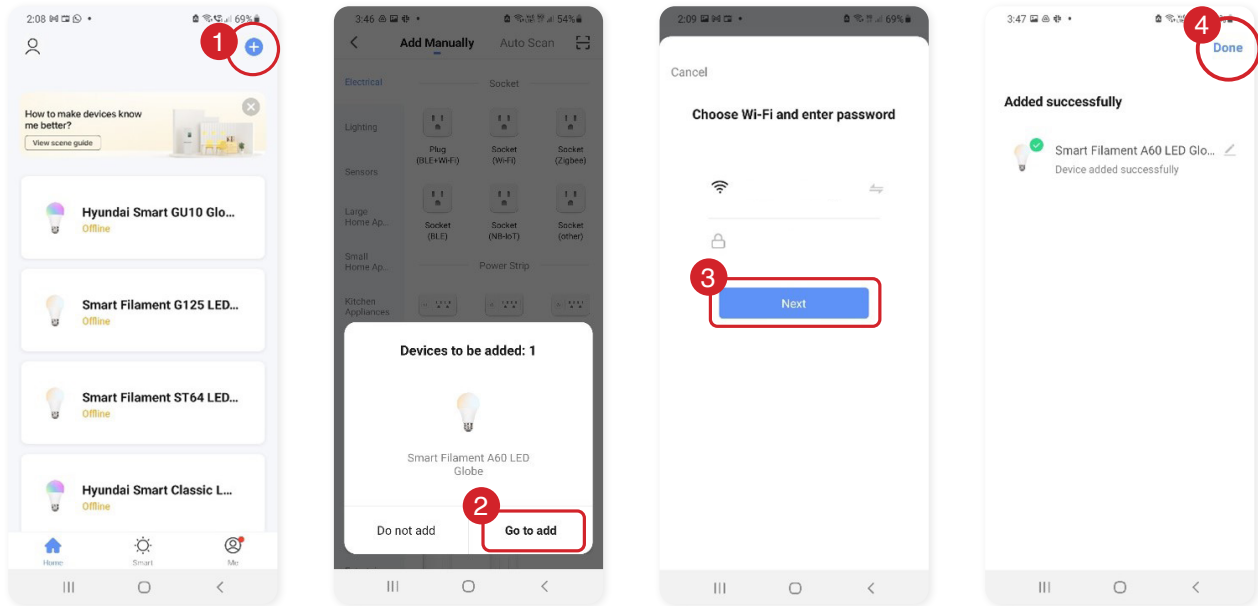
The frequency of blinking in pairing mode is approx. 2 times a second. If it is blinking much slower, repeat step 1 until it starts blinking correctly.

- 2 Both the mobile phone/tablet and bulbs must be in the same Wi-Fi network while pairing. Once paired, the bulbs can be controlled remotely using the mobile device.
- 3 In the Smart Life app, press the (+) symbol on the top right-hand corner. When device window pops up with the light to add, press “Go to add”. If the device window does not pop up, add the device manually by selecting “Lighting” tab on the left panel and choosing “Light Source (BLE + WiFi)” option. If a pop-up window asking for SSID and password for your Wi-Fi connection appears, enter the details (see examples below and in the next page, for reference).

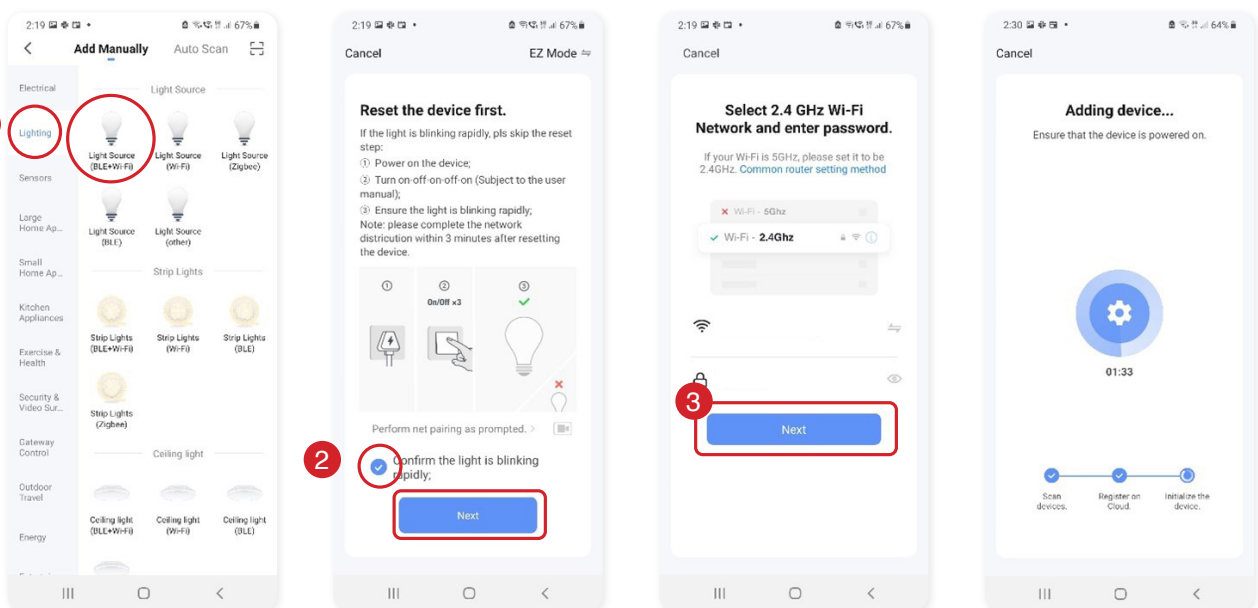
While pairing multiple bulbs at the same time, if some bulbs are left unpaired, disconnect the power supply to the paired ones and then pair the remaining ones following the same process. Once paired, all the bulbs can be re-connected to the power supply and controlled.

Smart Filament LED Bulb Installation Manual

Automatic detection of device and pairing



Manual detection of device and pairing



Smart Filament LED Bulb Installation Manual

- Pairing process will begin. Do not turn off the bulb while pairing and wait for the pairing process to complete. If you get a message that says - "Failed to Add", repeat the steps from 1 to 3 to pair the device.
- Once the device has been successfully added, you can begin using it.

Functionalities

Control remotely

With Smart Life - Smart Living - Smart Living, you can control all your smart lights remotely from your smartphone app. Whether you're in a different room, at work, or halfway across the world, you can control your smart lights using just a wireless connection and your smartphone app.

Control using voice commands

You can configure the Smart Life - Smart Living - Smart Living app using voice commands through Amazon Alexa or Google Assistant. This means that you can control all your lights using voice commands, so you don't even need to manually access your Smart Life - Smart Living - Smart Living app. To control the devices through voice commands, you'll need to configure your Smart Life - Smart Living - Smart Living app voice commands.

Visit <https://hyundailighting.com.au/using-google-home-or-amazon-alexa-to-control-your-lights/> for steps to configure voice commands for Amazon Alexa or Google Home.

Tune white colour

In "White mode", you can change the colour temperature from warm white to daylight using the colour temperature wheel and the brightness of the bulb using the scroll bar below the colour temperature wheel. See example [1] in the next page for reference.

Lighting scenes

There are different pre-set scene modes to choose from or you can create your own by pressing "Add scene". See example [2] on the next page for reference.

Schedule

You can schedule your bulb to turn on or off at certain times of the day using the "schedule" tab on the bottom right corner. See example [3] in the next page for reference.

Group

If you have multiple smart filament bulbs, you can group and control them simultaneously with a single tap or voice command. Add all the bulbs to your Smart Life app individually and select one light. Select the edit button on the top right corner and "Create Group". Then add all the lights you want to add to the group and press "Save". Next, name the group for easy recognition and "Save". The group will now show up on the home screen of the app. See example [4] in the next page for reference.

Tap-to-Run and Automation

You can choose from several pre-defined smart automations scenes or create your own automation scenes to control the bulbs. Select "Smart" tab on the bottom centre of the app home screen to access the smart scenes. See example [4] in the next page for reference.

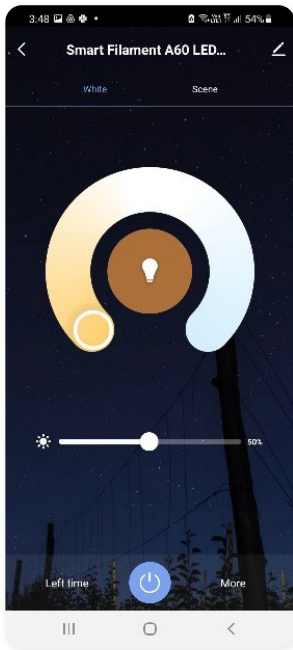
Share device

You can share the management controls with your friends and family members so that they can also control the lights using their smartphones. See example [4] in the next page for reference.

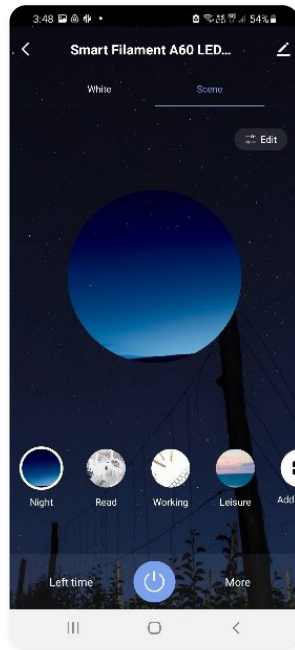
Remove device

From the home screen, select the device you want to remove. Then select the edit button and press the "Remove Device" button at the bottom.

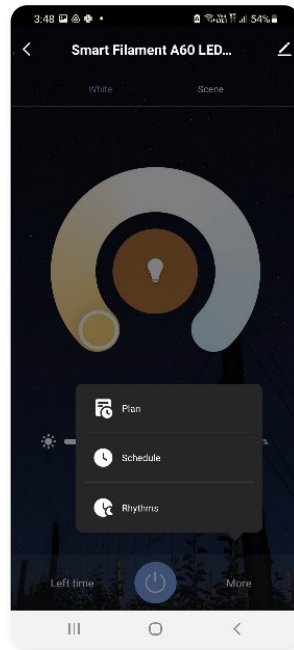
Smart Filament LED Bulb Installation Manual



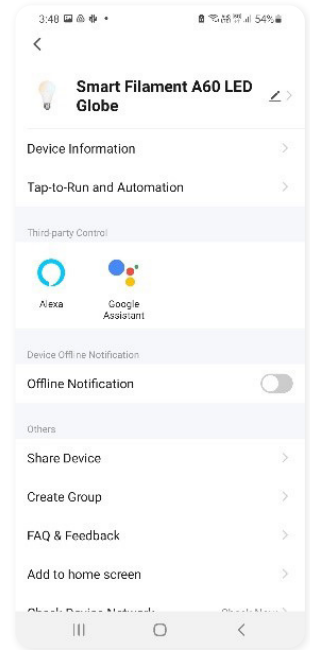
[1]



[2]



[3]



[4]



The RCM marking of this product applies to **AS/NZS CISPR15** (EMC) "Limits and methods of measurement of radio disturbance characteristics of electrical lighting and similar equipment". This product is designed to conform to **AS/NZS60598** "Luminaires, general requirements and tests".