

Smart GU10 LED Bulb Installation Manual



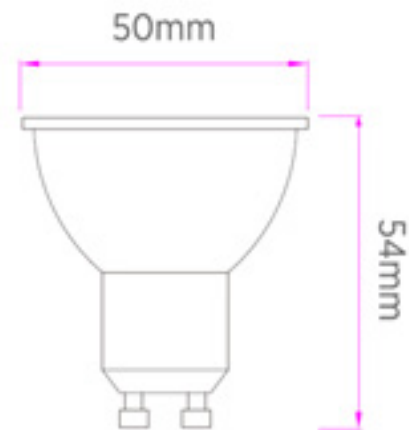
Smart GU10 LED Bulb Installation Manual

Specifications

Parameters	HYUGU003W
CCT	2700K – 6500K + RGB
Colour Rendering Index	>80
Total Power	5W
Lumen Output	450lm
Voltage Rating	240V
Dimmable	Yes
Rated Average Design Life	25,000Hrs
Base	GU10
Dimensions	50x54mm
WiFi	2.4GHz

Installation

- 1 Install Smart GU10 LED Bulb by rotating the bulb clockwise into the base.



Download App

Download “Smart Life – Smart Living” app from Apple store or Google Play and install it into your smart phone or tablet device. Alternatively, scanning the QR code below will take you to the app’s download page.



Registration and Login

- 1 Open the “Smart Life – Smart Control” app from your smart phone.
- 2 Follow the prompts to register and login.

Smart GU10 LED Bulb Installation Manual

Add device

NOTE: Smart GU10 LED Bulb must be connected to 2.4 GHz (not 5 GHz) WiFi connection for smart control. Visit <https://hyundailighting.com.au/switching-your-wifi-from-5ghz-to-2-4ghz/> for steps to switch your Wi-Fi network from 5 GHz to 2.4 GHz.

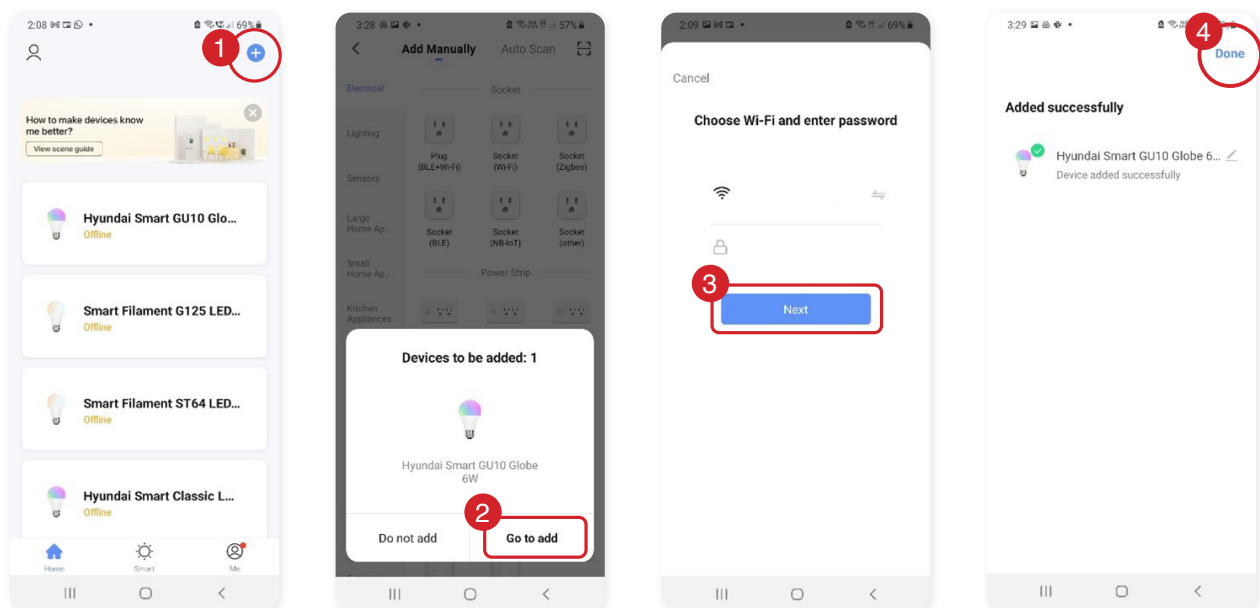
- 1 Connect the Smart GU10 LED Bulb to a power source. Once connected, the bulb will start blinking rapidly indicating it is in pairing mode. If not, to enter pairing mode, turn the bulb on and then off 3 to 5 times with one second wait between turning on and off. Finally, the bulb must be on and should start blinking rapidly by now.

The frequency of blinking in pairing mode is approx. 2 times a second. If it is blinking much slower, repeat step 1 until it starts blinking correctly.

- 2 Both the mobile phone/tablet and the bulbs must be in the same Wi-Fi network while pairing. Once paired, the bulbs can be controlled remotely using the mobile device.
- 3 In the Smart Life app, press the (+) symbol on the top right-hand corner. When device window pops up with the light to add, press "Go to add". If the device window does not pop up, add the device manually by selecting "Lighting" tab on the left panel and choosing "Light Source (BLE + WiFi)" option. If a pop-up window asking for SSID and password for your Wi-Fi connection appears, enter the details (see examples below and in the next page, for reference).

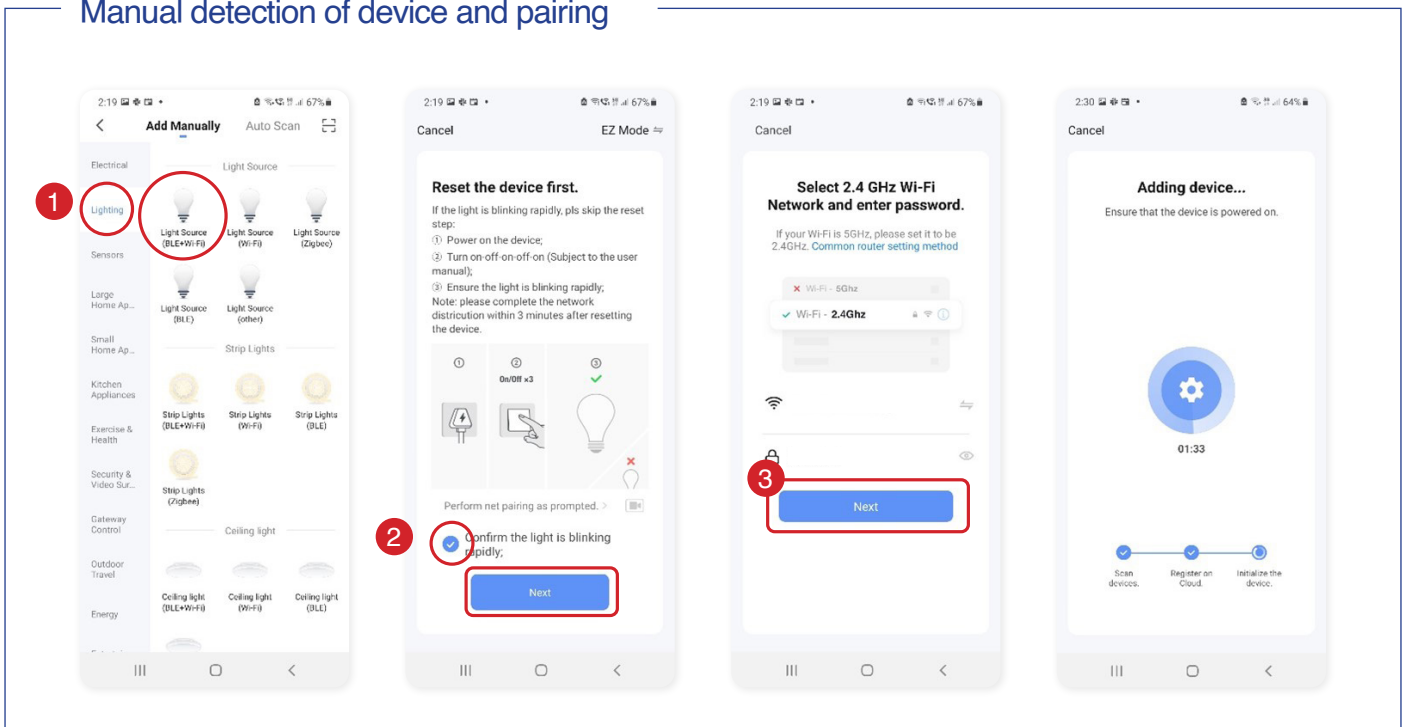
While pairing multiple bulbs at the same time, if some bulbs are left unpaired, disconnect the power supply to the paired ones and then pair the remaining ones following the same process. Once paired, all the bulbs can be re-connected to the power supply and controlled.

Automatic detection of device and pairing



Smart GU10 LED Bulb Installation Manual

Manual detection of device and pairing



- Pairing process will begin. Do not turn off the bulb while pairing and wait for the pairing process to complete. If you get a message that says - "Failed to Add", repeat the steps from 1 to 3 to pair the device.
- Once the device has been successfully added, you can begin using it.

Control using voice commands

You can configure the Smart Life app using voice commands through Amazon Alexa or Google Assistant. This means that you can control all your lights using voice commands, so you don't even need to manually access your Smart Life app. To control the devices through voice commands, you'll need to configure your Smart Life app voice commands.

Visit <https://hyundailighting.com.au/using-google-home-or-amazon-alexa-to-control-your-lights/> for steps to configure voice commands for Amazon Alexa or Google Home.

Functionalities

Control remotely

With Smart Life, you can control all your smart lights remotely from your smartphone app. Whether you're in a different room, at work, or halfway across the world, you can control your smart lights using just a wireless connection and your smartphone app.

Tune white colour

In "White mode", you can change the colour temperature from warm white to daylight using the colour temperature wheel and the brightness of globe using the scroll bar below the colour temperature wheel. See example [1] in the next page for reference.

Smart GU10 LED Bulb Installation Manual

Choose colours

In “Colour mode”, you can choose up to 16 million different colours using the colour wheel and control the brightness and contrast using the scrolls below. See example [2] in the next page for reference.

Lighting scenes

There are different pre-set scene modes to choose from or you can create your own by pressing “Add scene”. See example [3] in the next page for reference.

Sync with Music

The “Music tab” will enable the lights to change colours according to the beats of music. [4]

Schedule

You can schedule your globes to turn on or off at certain times of the day using the “schedule” tab on the bottom right corner. [5]

Group

If you have multiple smart globes or other smart lights, you can group and control them simultaneously with a single tap or voice command. Add all the smart lights to your Smart Life app individually and select one light. Select the edit button on the top right corner and “Create Group”. Then add all the lights you want to add to the group and press “Save”. Next, name the group for easy recognition and “Save”. The group will now show up on the home screen of the app. See example [6] in the next page for reference.

Tap-to-Run and Automation

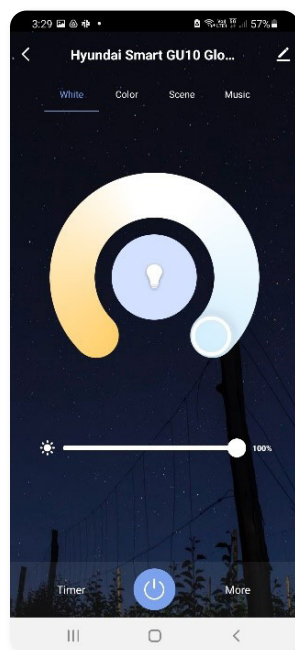
You can choose from several pre-defined smart automations scenes or create your own automation scenes to control the globes. Select “Smart” tab on the bottom centre of the app home screen to access the smart scenes. See example [6] in the next page for reference.

Share device

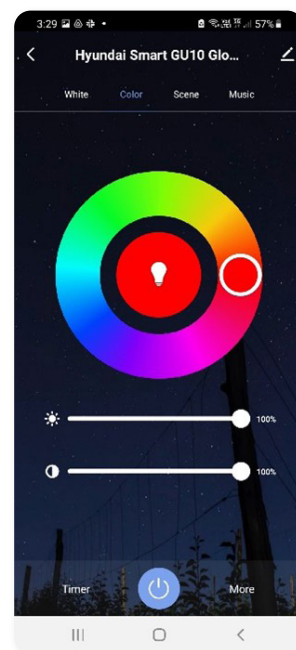
You can share the management controls with your friends and family members so that they can also control the lights using their smartphones. See example [6] in the next page for reference.

Remove device

From the home screen, select the device you want to remove. Then select the edit button and press the “Remove Device” button at the bottom.

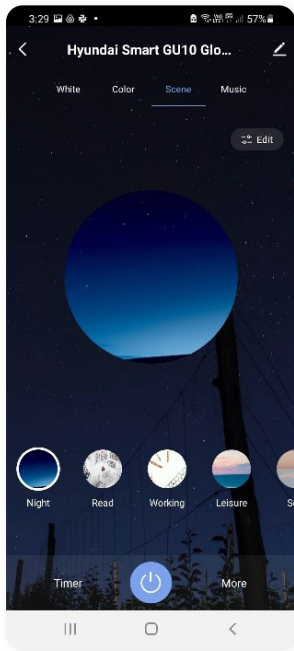


[1]

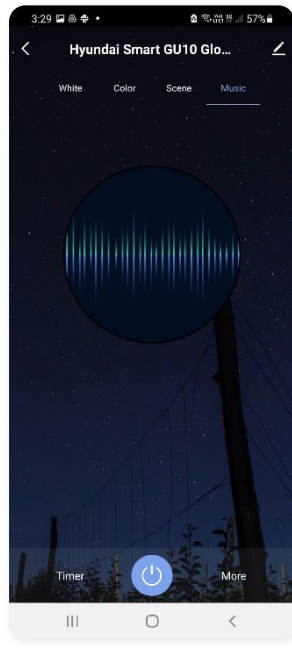


[2]

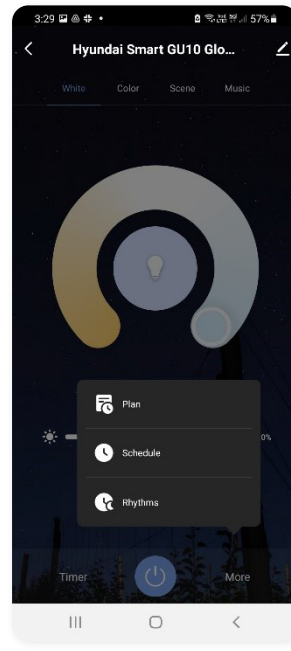
Smart GU10 LED Bulb Installation Manual



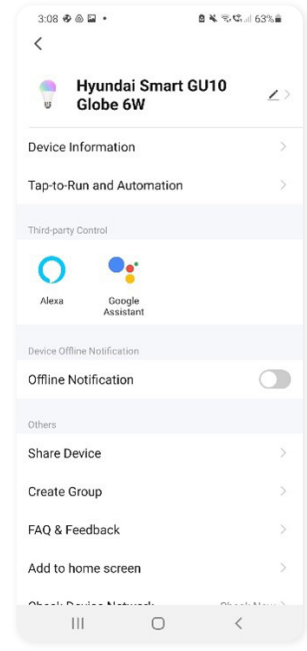
[3]



[4]



[5]



[6]



The RCM marking of this product applies to **AS/NZS CISPR15** (EMC) "Limits and methods of measurement of radio disturbance characteristics of electrical lighting and similar equipment". This product is designed to conform to **AS/NZS60598** "Luminaires, general requirements and tests".