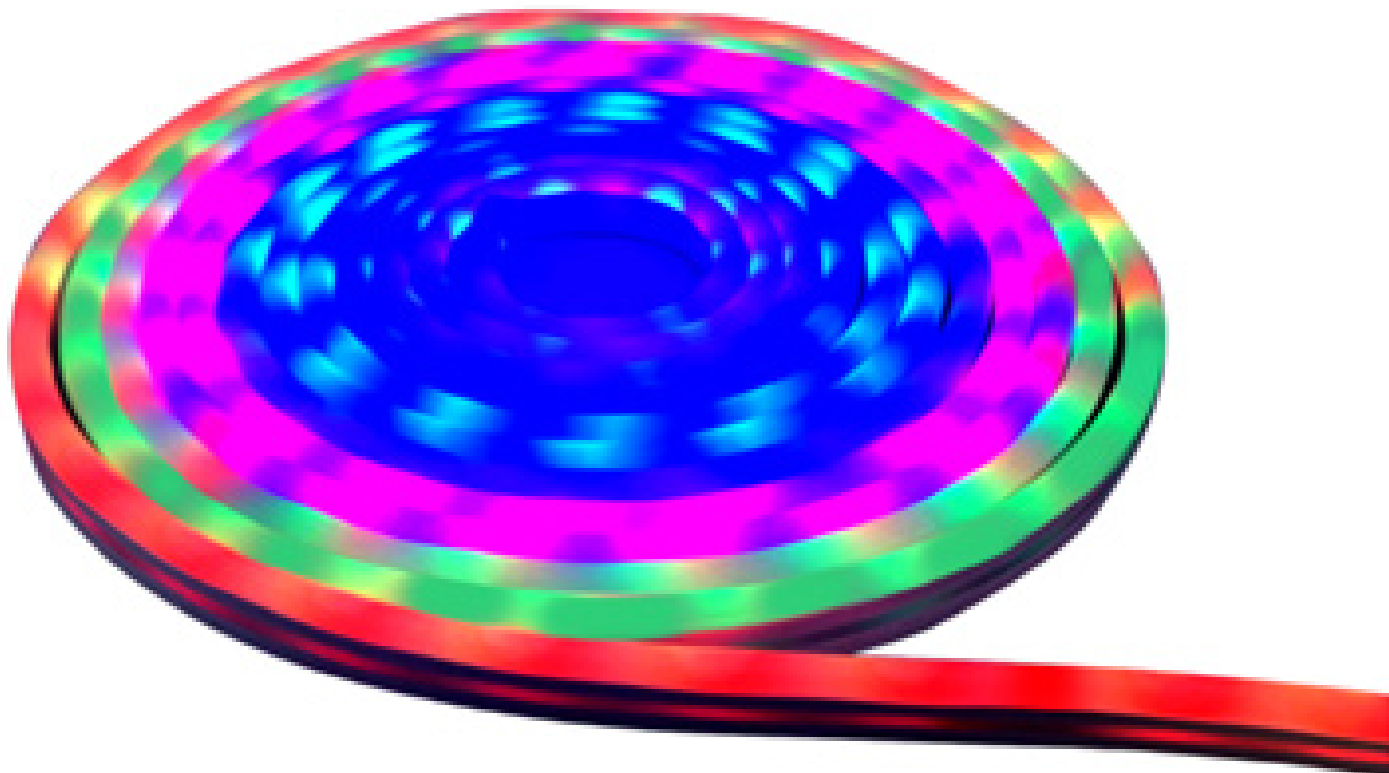


# Vibelite Neon LED Flex Installation Manual



## Vibelite Neon LED Flex Installation Manual

### Specifications

Parameters	HYUSTR001N
CCT	RGB
Colour Rendering Index	>80
Total Power	24W
IP Rating	IP65
Voltage Rating	24V DC
Dimmable	Yes
Rated Average Design Life	36,000 Hrs
WiFi Frequency	2.4GHz
Dimensions	10x5000mm

Swallowing may lead to serious injury in as little as 2 hours, due to chemical burns and potential perforation of the oesophagus.

If you suspect your child has swallowed or inserted a button battery, immediately call the 24-hour

Poisons Information Centre on 13 11 26 (in Australia) for fast, expert advice.

Examine devices and make sure the battery compartment is correctly secured. Do not use if compartment is not secure.

Dispose of used button batteries immediately and safely.



### Warranty information

3 years limited warranty.  
Visit <https://hyundailighting.com.au/terms-and-conditions/> for detailed warranty information.

Email: [info@hyundailighting.com.au](mailto:info@hyundailighting.com.au)

### Package contents

- a 5m (HYUSTR001N) LED Strip.
- b 24V DC Power Adaptor with 1.5m adaptor lead.
- c LED controller compatible with RF remote and TUYA app.
- d RF remote controller with battery.
- e Mounting clips.

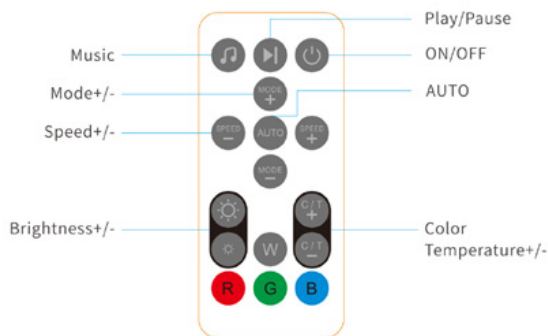
### Installation

Before the installation, please ensure the power is off.

- 1 Ensure that surface is clean and dry prior to applying LED Strip. It is recommended to use rubbing alcohol and not any household cleaners or water.
- 2 Mount on to the surface using mounting clips.
- 3 Plug power adaptor into power point.
- 4 To control the Vibelite Neon LED Flex, you can use Smart Life – Smart Control app on your phone or tablet or alternatively use the remote control.

## Vibelite Neon LED Flex Installation Manual

In order to start using the RF remote, you must pull the insulation strip and make sure the remote is pointed in the line of sight to the receiver.



### ON/OFF

Short press the button to turn on/off the LED light

Press and hold for 5 seconds to enter the network configuration mode, and the indicator will flash quickly; in the fast-flashing state, press and hold for 5 seconds to enter the hotspot network configuration mode; the network configuration operation will be completed within 3 minutes

### MUSIC

Short press the button to cycle through scenes

Double-click the button to cycle through static, pre-set, music and other modes

Long press the button to enter/exit the music mode

### Play/Pause

Play or pause

### AUTO

Click to enter automatic scene mode

### SPEED+/-

### Brightness+/-

Short press the button to adjust the speed cyclically

Long press the button to adjust the brightness cyclically

### MODE+/-

Adjust the scene mode

### Colour Temperature+/-

32 preset colours

### RGBW

Click to switch colours (red, green, blue, white)

## Instructions on powering the strip

Connect the DC jack on one end of the power adapter to the receiver that is attached to the light. Subsequently, plug-in the adaptor to an outlet and switch it on.



## Download App

Download “Smart Life – Smart Living” app from Apple store or Google Play and install it into your smart phone or tablet device. Alternatively, scanning the QR code below will take you to the app’s download page.



## Registration and Login

- 1 Open the “Smart Life – Smart Living” app from your smart phone.
- 2 Follow the prompts to register and login

## Vibelite Neon LED Flex Installation Manual

### Add device

**NOTE:** Vibelite Neon LED Flex must be connected to 2.4 GHz (not 5 GHz) WiFi connection for smart control. Visit <https://hyundailighting.com.au/switching-your-wifi-from-5ghz-to-2-4ghz/> for steps to switch your Wi-Fi network from 5 GHz to 2.4 GHz.

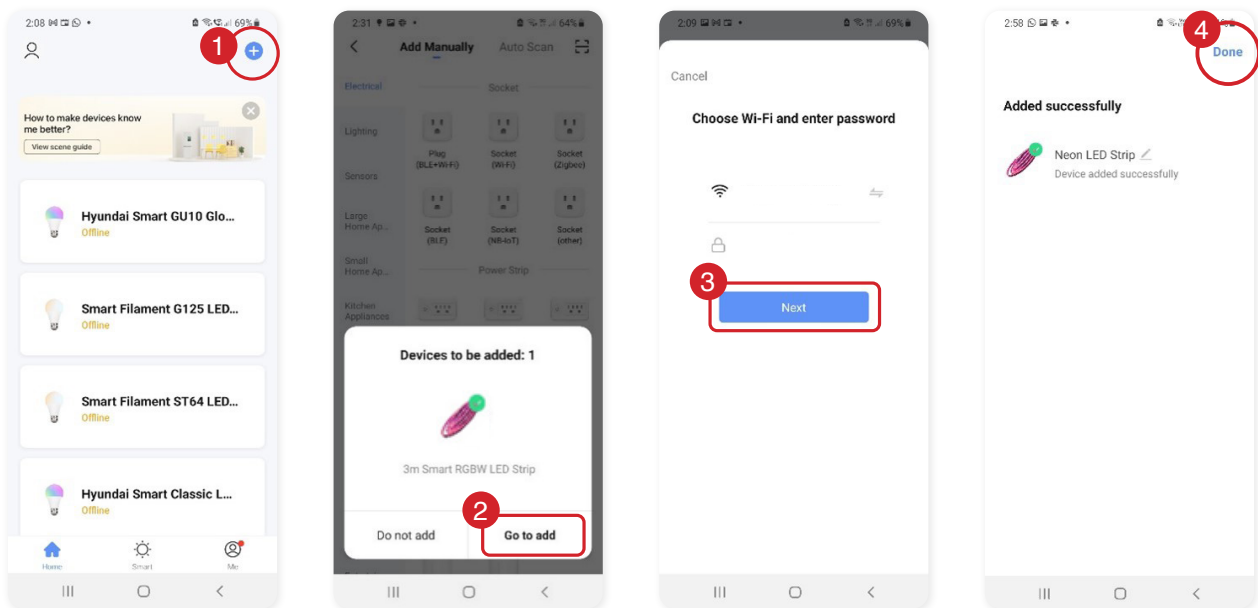
- 1 Connect the Vibelite Neon LED Flex Strip to a power source. Once connected, the strip will start blinking rapidly indicating it is in pairing mode. If not, to enter pairing mode, turn the strip on and then off 3 to 5 times with one second wait between turning on and off. Finally, it must be on. The strip should start blinking rapidly by now.

The frequency of blinking in pairing mode is approx. 2 times a second. If it is blinking much slower, repeat step 1 until it starts blinking correctly.

- 2 Both the mobile phone/tablet and the strips must be in the same Wi-Fi network while pairing. Once paired, they can be controlled remotely using the mobile device.
- 3 In the Smart Life - Smart Living app, press the (+) symbol on the top right-hand corner. When device window pops up with the light to add, press "Go to add". If the device window does not pop up, add the device manually by selecting "Lighting" tab on the left panel and choosing "Light Source (BLE + WiFi)" option. If a pop-up window asking for SSID and password for your Wi-Fi connection appears, enter the details (see examples in the next page for reference).

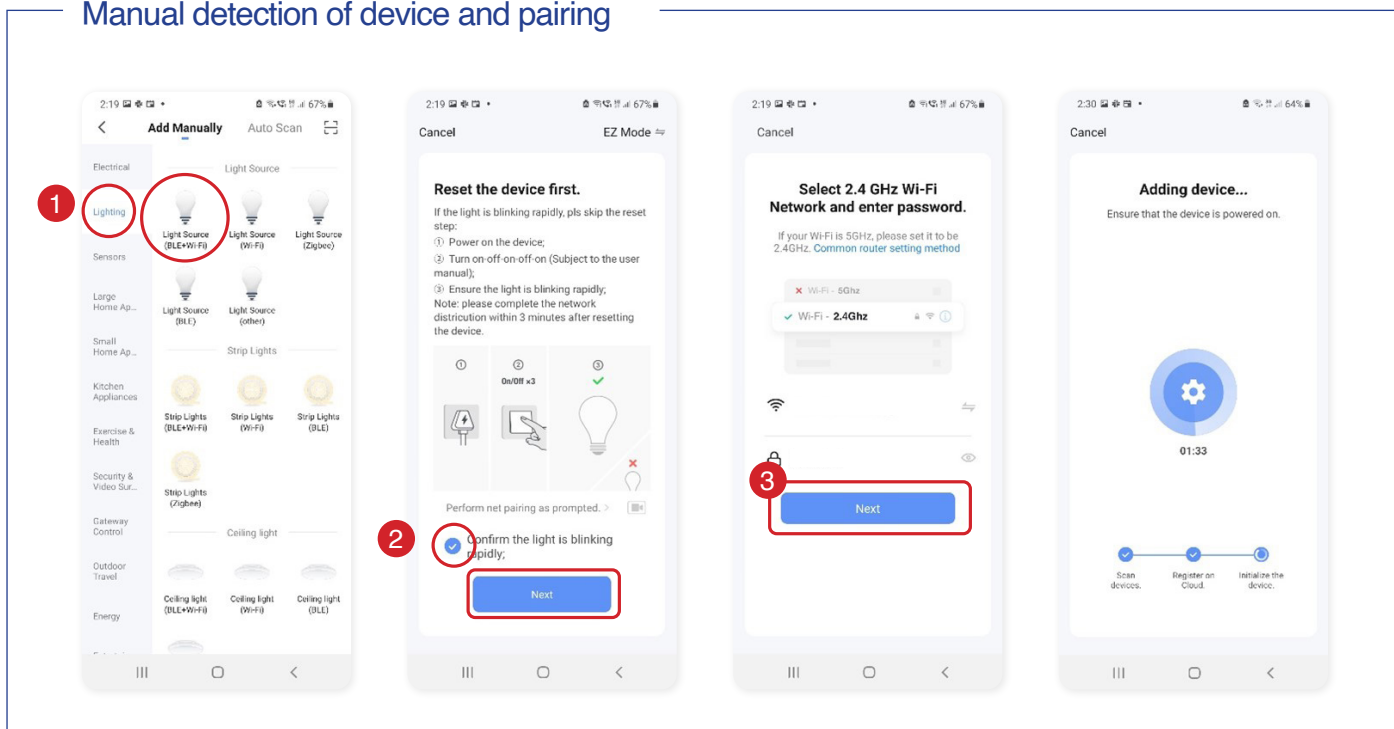
While pairing multiple vibelites at the same time, if some vibelites are left unpaired, disconnect the power supply to the paired ones and then pair the remaining ones following the same process. Once paired, all the vibelites can be re-connected to the power supply and controlled.

### Automatic detection of device and pairing



## Vibelite Neon LED Flex Installation Manual

### Manual detection of device and pairing



- 4 Pairing process will begin. Do not turn off the strip while pairing and wait for the pairing process to complete. If you get a message that says - "Failed to Add", repeat the steps from 1 to 3 to pair the device.
- 5 Once the device has been successfully added, you can begin using it.

## Functionalities

### Control remotely

With Smart Life - Smart Living, you can control all your smart lights remotely from your smartphone app. Whether you're in a different room, at work, or halfway across the world, you can control your smart lights using just a wireless connection and your smartphone app.

### Control using voice commands

You can configure the Smart Life - Smart Living app using voice commands through Amazon Alexa or Google Assistant. This means that you can control all your lights using voice commands, so you don't even need to manually access your Smart Life - Smart Living app. To control the devices through voice commands, you'll need to configure your Smart Life - Smart Living app voice commands.

Visit <https://hyundailighting.com.au/using-google-home-or-amazon-alexa-to-control-your-lights/> for steps to configure voice commands for Amazon Alexa or Google Home.

### Tune white colour

In "White mode", you can change the colour temperature from warm white to daylight using the colour temperature wheel and the brightness of strip using the scroll bar below the colour temperature wheel. See example [1] in the next page for reference.

## Vibelite Neon LED Flex Installation Manual

### Choose colours

In “Colour mode”, you can choose up to 16 million different colours using the colour wheel and control the brightness and contrast using the scrolls below. See example [2] in the next page for reference.

### Lighting scenes

There are different pre-set scene modes to choose from or you can create your own by pressing “Add scene”. See example [3] in the next page for reference.

### Sync with Music

The “Music tab” will enable the lights to change colours according to the beats of music. See example [5] in the next page for reference.

### Schedule

You can schedule your strip to turn on or off at certain times of the day using the “schedule” tab on the bottom right corner. See example [6] in the next page for reference.

### Group

If you have multiple smart LED strips or other smart lights, you can group and control them simultaneously with a single tap or voice command. Add all the smart lights to your Smart Life app individually and select one light. Select the edit button on the top right corner and “Create Group”. Then add all the lights you want to add to the group and press “Save”. Next, name the group for easy recognition and “Save”. The group will now show up on the home screen of the app. See example [6] in the next page for reference.

### Tap-to-Run and Automation

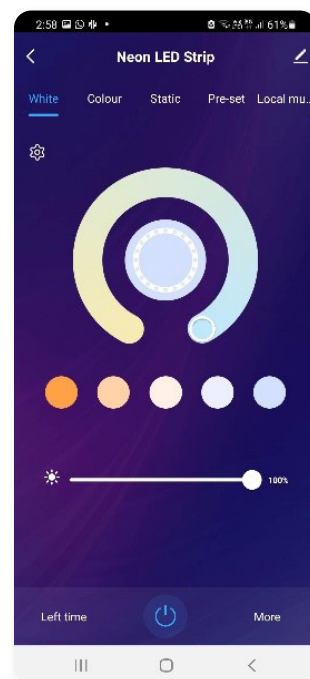
You can choose from several pre-defined smart automations scenes or create your own automation scenes to control the strips. Select “Smart” tab on the bottom centre of the app home screen to access the smart scenes. See example [6] in the next page for reference.

### Share device

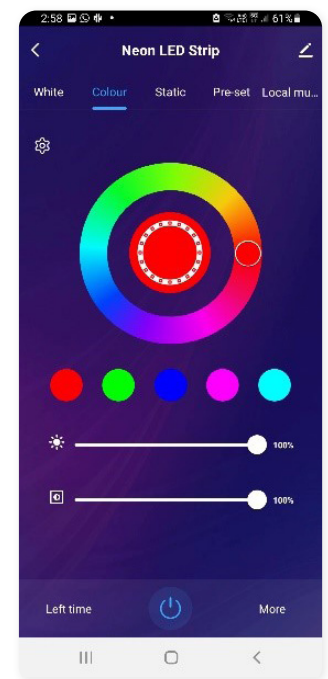
You can share the management controls with your friends and family members so that they can also control the lights using their smartphones. See example [6] below for reference.

### Remove device

From the home screen, select the device you want to remove. Then select the edit button and press the “Remove Device” button at the bottom.



[1]

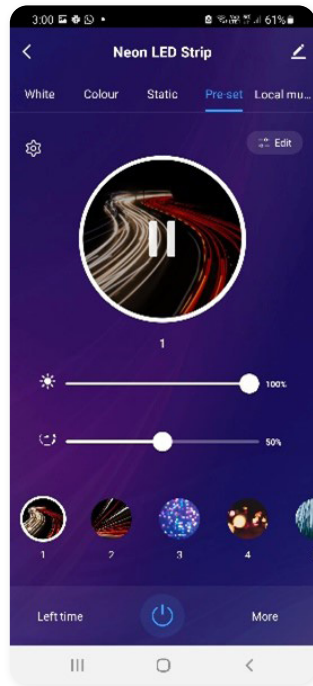


[2]

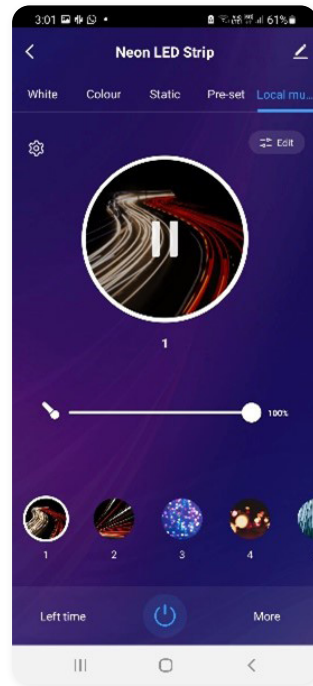
## Vibelite Neon LED Flex Installation Manual



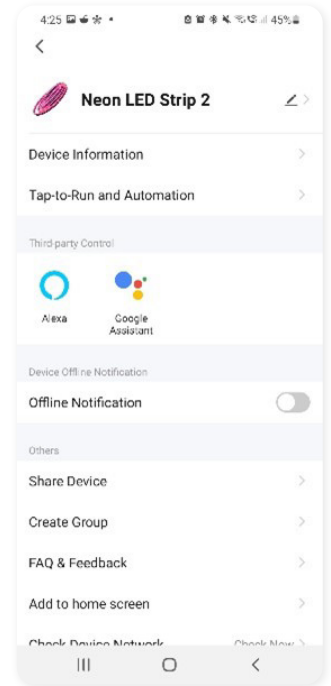
[3]



[4]



[5]



[6]



The RCM marking of this product applies to **AS/NZS CISPR15** (EMC) "Limits and methods of measurement of radio disturbance characteristics of electrical lighting and similar equipment". This product is designed to conform to **AS/NZS60598** "Luminaires, general requirements and tests".