

# Garden Glow Installation Manual



## Garden Glow Installation Manual

### Specifications

Product code	HYUSGG001
Lamp power	0.5W
Lamp current	15-20mA
Lamp colour	RGBW
Battery capacity	1000mAh (Li-)
Battery voltage	3.7V
Protocol	Bluetooth Mesh
Solar panel voltage	6V
Solar panel output current	130mA
Control distance	20m
IP rating	IP65
Operating temperature range	-25°C - +40°C

### Download App

Download “Smart Life – Smart Living” app from Apple store or Google Play and install it into your smart phone or tablet device. Alternatively, scanning the QR code below will take you to the app’s download page.



### Warranty information

3 years limited warranty. Visit <https://hyundailighting.com.au/terms-and-conditions/> for detailed warranty information.  
Email: [info@hyundailighting.com.au](mailto:info@hyundailighting.com.au)

### Registration and Login

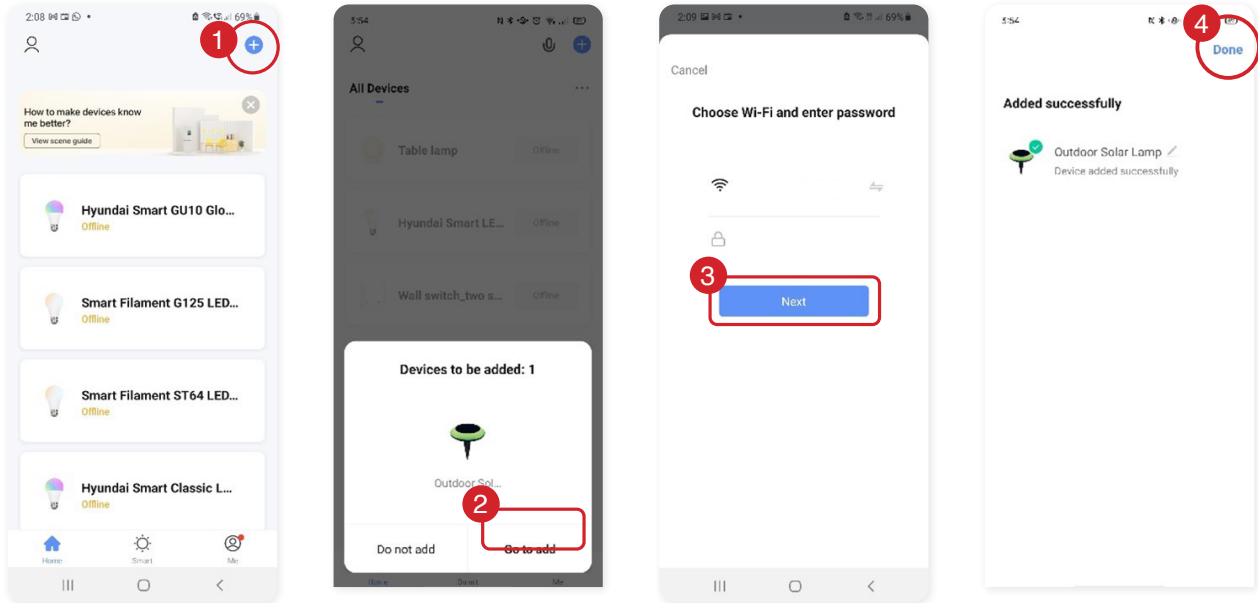
- 1 Open the “Smart Life – Smart Living” app from your smart phone.
- 2 Follow the prompts to register and login.

### Add device

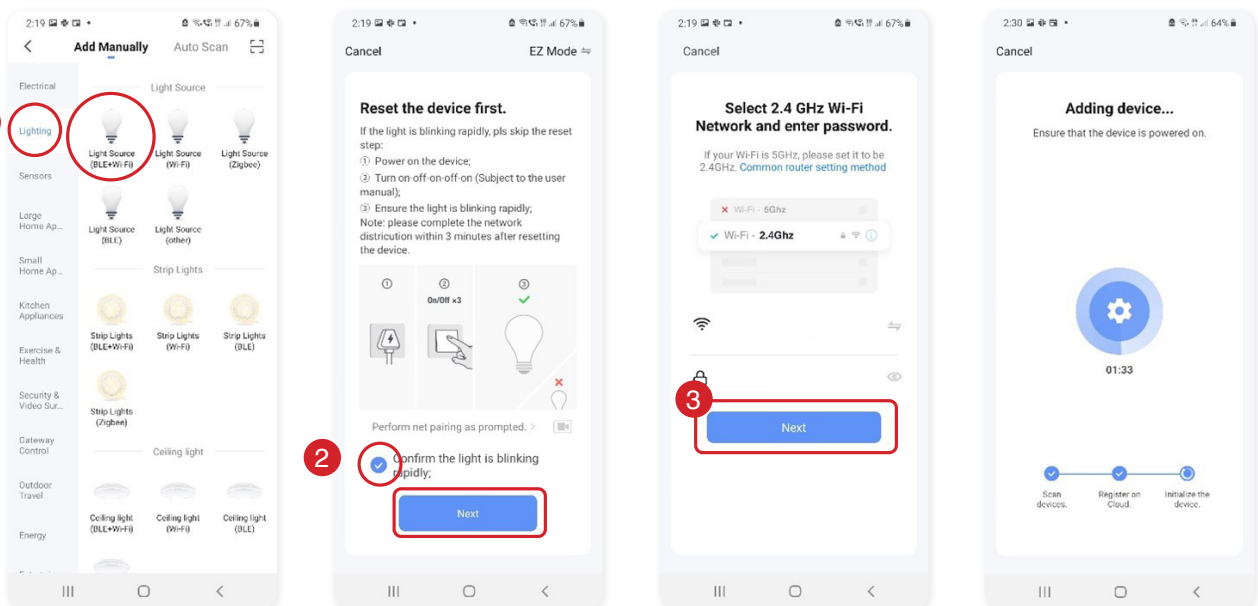
- 1 Make sure the Bluetooth is turned on in your phone’s settings.
- 2 Press the power button on the bottom to turn light on.
- 3 Wait 1-2 seconds and then press to turn light off, wait 1-2 seconds, then press to turn light on. Do this 3-4 times. Once the white light starts blinking the light is in set up mode. (if light does not turn on, it may need to be charged. Place in sunlight to charge. Light takes about 6-8 hours of sunlight to fully charge)
- 4 When in setup mode, before connecting your phone, make sure to cover the solar panel/light sensor with something or turn the light upside down on a flat surface to cover.
- 5 Then press the (+) symbol on the top right-hand corner in the app homepage. When device window pops up with the light to add, press “Go to add” (see pic below).
- 6 Connecting process will begin. Do not turn off Garden Glow while connecting. Wait for connection process to complete.
- 7 Once the device has been successfully added, you can begin using it.

## Garden Glow Installation Manual

### Automatic detection of device and pairing



### Manual detection of device and pairing



## Garden Glow Installation Manual

### Functionalities

#### Control remotely

With Smart Life – Smart Living, you can control all your smart lights remotely from your smartphone app.

#### Change Brightness

In “White mode”, you can change the brightness of the white light by simply swiping up and down. See example [1] in the next page for reference.

#### Choose colours

In “Colour mode”, you can choose up to 16 million different colours using the colour wheel and control the brightness by swiping up and down. See example [2] in the next page for reference.

#### Lighting scenes

There are different pre-set scene modes to choose from or you can create your own by pressing the ‘+’ under “Custom Scene”. See example [3] in the next page for reference.

#### Sync with Music

The “Music tab” will enable the lights to change colours according to the beats of music. See example [4] in the next page for reference.

#### Control Smartly

You can also control the device based on set conditions. Select the icon on the bottom left corner. Then, define the condition such as a certain level of battery percentage. Next, define the light function when that condition is met under “Task” menu. Name the smart control and press “Save”. See example [5] in the next page for reference.

#### Group

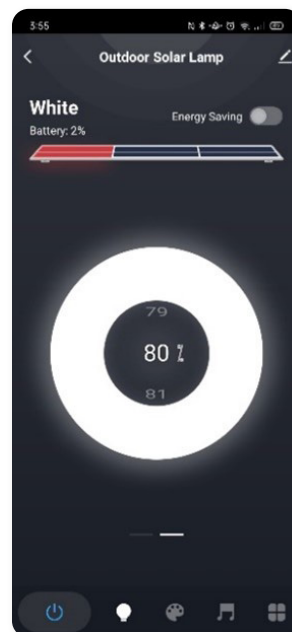
If you have multiple Garden Glows, you can group and control them simultaneously. Add all the Garden Glows to your Smart Life – Smart Living, app and select one of them. Select the edit button on the top right corner and select “Create Group”. Then add all the lights you want to add to the group and press “Save”. Next name the group and press “Save”. The group will now show up on the home screen of the app. See example [6] in the next page

#### Tap-to-Run and Automation:

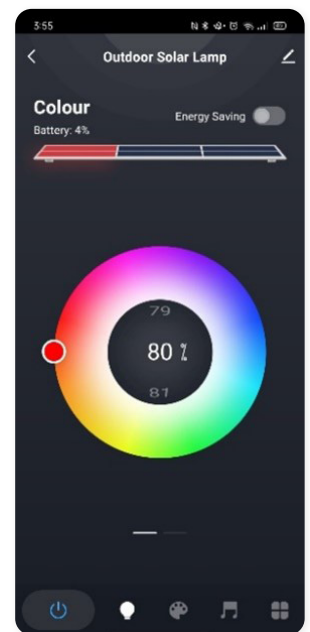
You can choose from several pre-defined smart automations scenes or create your own automation scenes to control the lights. Select “Smart” tab on the bottom centre of the app home screen to access the smart scenes. See example [6] in the next page for reference.

#### Remove device

From the home screen, select the device you want to remove. Then select the edit button and press the “Remove Device” button at the bottom.

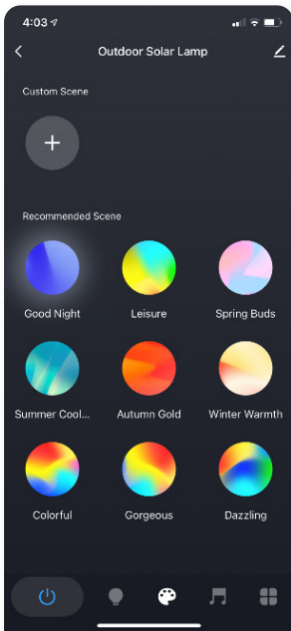


[1]

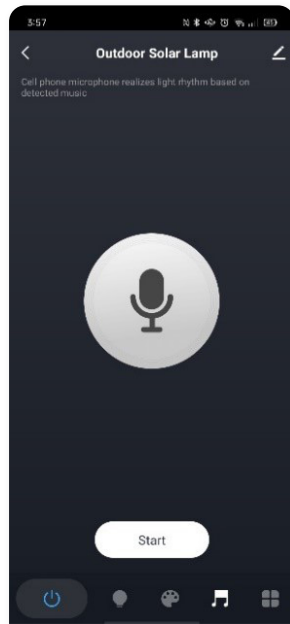


[2]

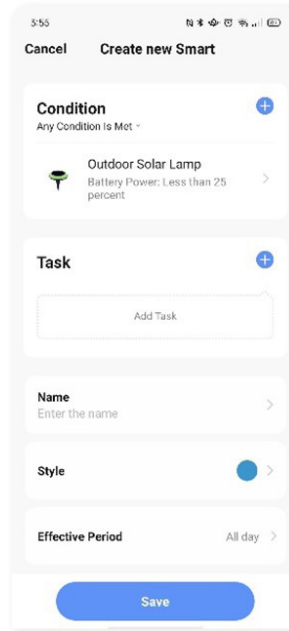
## Garden Glow Installation Manual



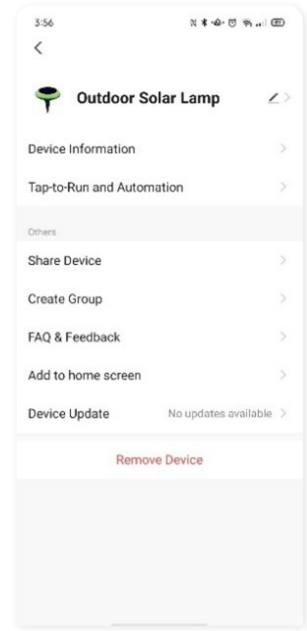
[3]



[4]



[5]



[6]



The RCM marking of this product applies to **AS/NZS CISPR15** (EMC) "Limits and methods of measurement of radio disturbance characteristics of electrical lighting and similar equipment". This product is designed to conform to **AS/NZS60598** "Luminaires, general requirements and tests".